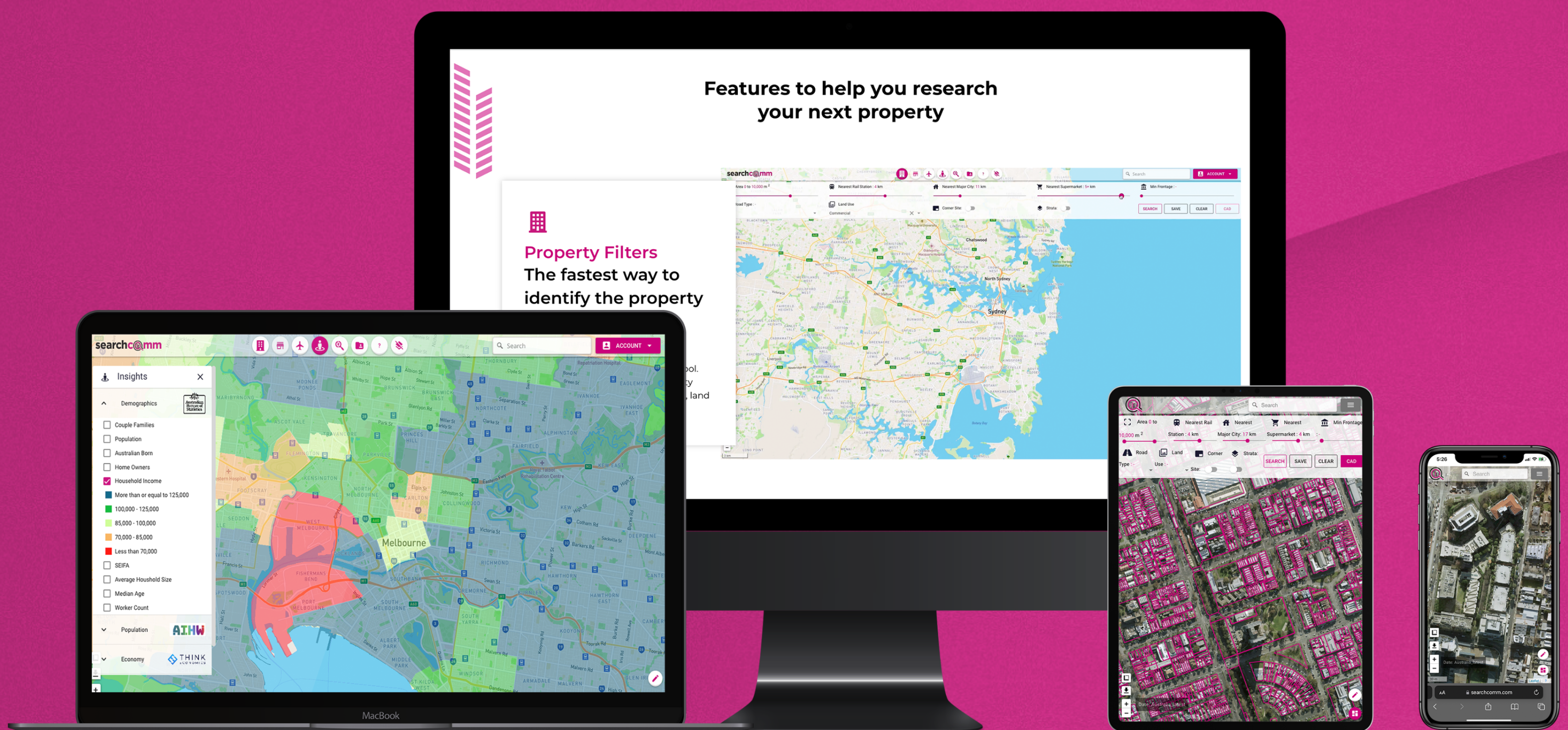


# Outpace the Competition

## The 4 Step Guide to using technology in Real Estate



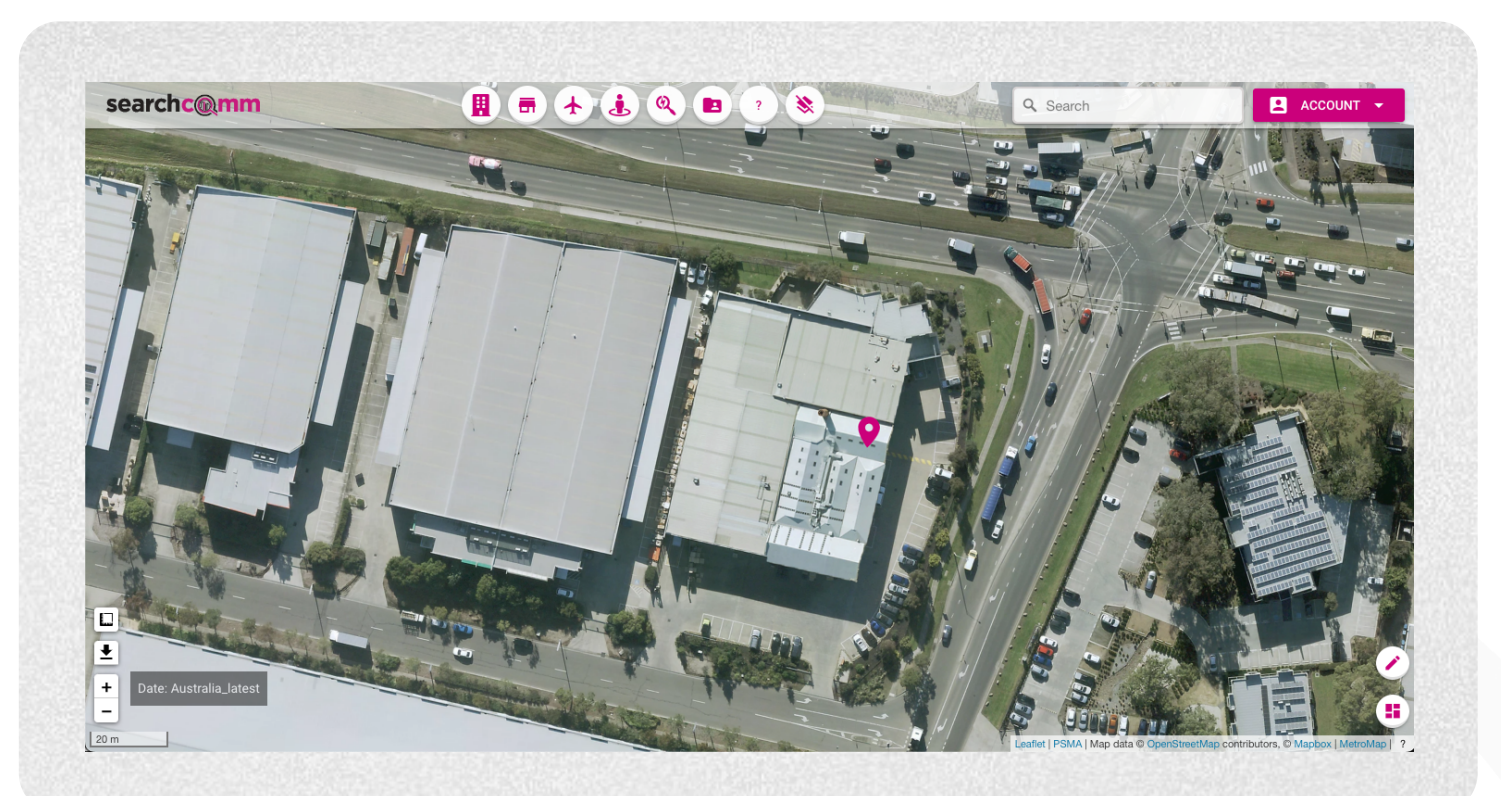




## Introduction

As a Property professional, technology can be an important tool to help stay ahead of the competition. Search Commercial has been built for the industry, based on direct feedback from the industry

Our easy to use features will save you time & money.







## Showcase your property with the highest quality images.

As much as a good suit, a good map will help. Search Commercial will provide you with access to the highest quality images in one place. With an easy search of an address, you can pull up aerial views, parcel boundaries, and historical images of the property.

Utilise our extensive drawing functionality & colour palette to extract high resolution aerial imagery of any property in Australia, and implement this into your Information Memorandum showcasing your property.

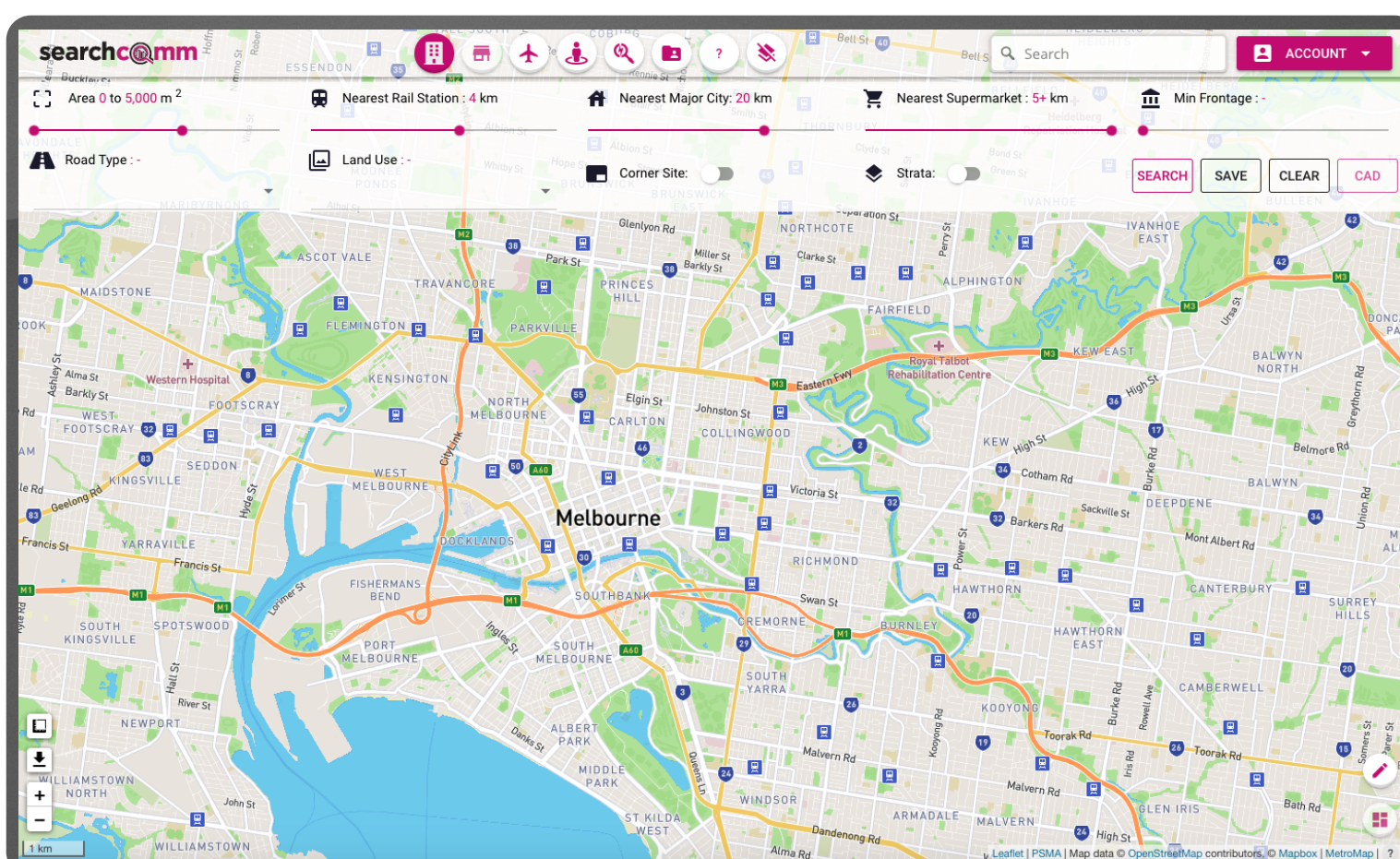
Alternatively, and without the requirement to utilise drone photography, extract a time stamped high res image and forward to clients at the click of button – speeding up your marketing, sales & leasing process and completing your transactions faster.

**Be the whole package with Search Commercial by your side.**



## Use our site finder tool and understand your next brief!

At Search Commercial, our site finding tool narrows a range of commercial property opportunities from a National database of 14m+ properties – shortlist properties that suit your needs based on a range of pre-determined criteria. When a client provides their RFP to understand potential new locations, rather than wait for submissions, utilise our site finding tool to shortlist potential options and inform your client from the outset. Search by area, frontage, distance to various amenities & much more; we have what you require to inform your client in only a matter of seconds.



**Be the whole package with Search Commercial**





## Detailed catchment analysis and comprehensive data driven reports improve your market understanding.

Impress your clients with your market knowledge by using powerful market content from reports generated with Search Commercial. Analyse a suite of available data including population, median income, age and much more - understanding what trends are emerging and how they can inform your next opportunity.

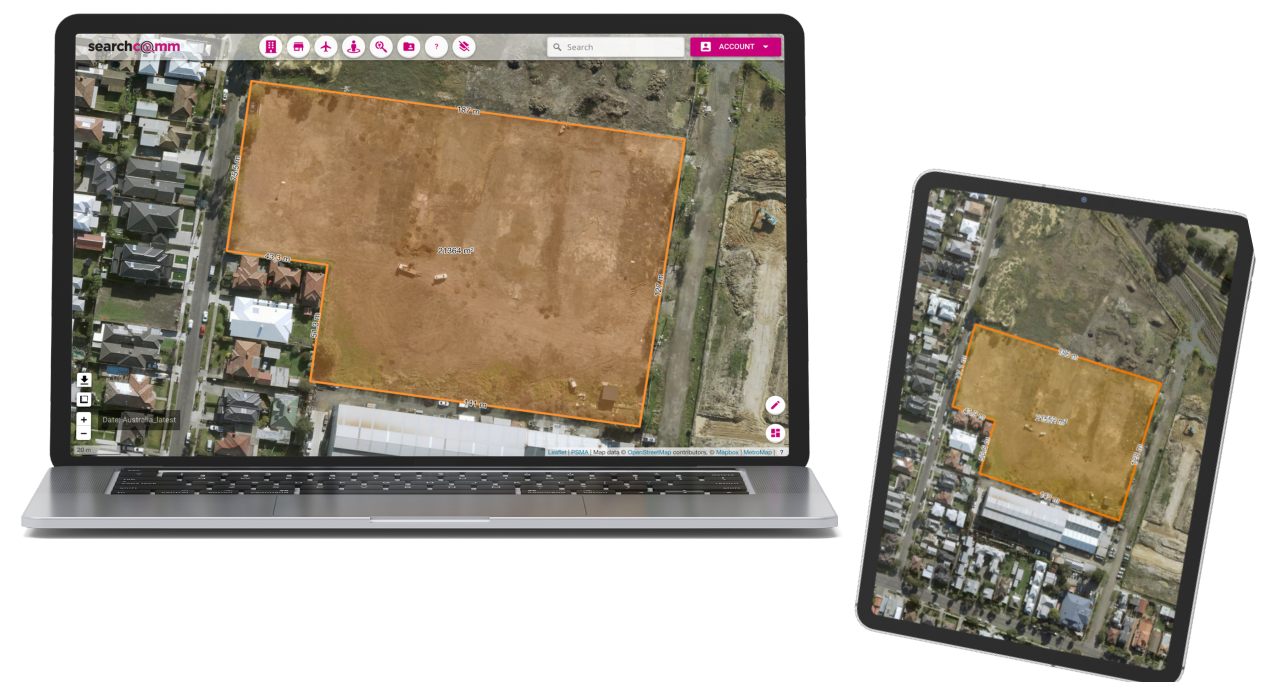
Anywhere in Australia, choose your location and generate either a 5, 10, 15 or 20 minute Drive, Walk or Bike catchment and understand the key socio-economic drivers within the designated area. Alternatively, utilise this tool to understand distances to key points, and map these using our location markers so you can analyse key operational points of any business. It might be the port, supermarkets, train stations or other store locations - each business has different requirements, but we cater to all.



## Do deals faster with Tech!

Whether it be recording all recent sales & leasing transactions, sales rates, building areas or competitor analysis, use our in-house mapping tool and create your interactive database. Next time you're out on site, leave behind that Notepad or large sheets of paper, and record the details of your discussions electronically in your own private and exclusive console.

When it comes time to presenting, your information is readily available, and your clients will be impressed by the level of detail you have at the click of a button.



**Look no further than Search Commercial. Head to our website and request a free demo today to see how Search Commercial can help you.**

[Book a Demo](#)
[Learn More](#)



# search cmmercial

 [www.searchcommercial.com.au](http://www.searchcommercial.com.au)  
 [info@searchcommercial.com.au](mailto:info@searchcommercial.com.au)